

Grand Lake Association / Association du Lac Grand

www.lacgrandlake.ca

274 Chemin du Lac Grand, Val-des-Monts, QC J8N 5J7

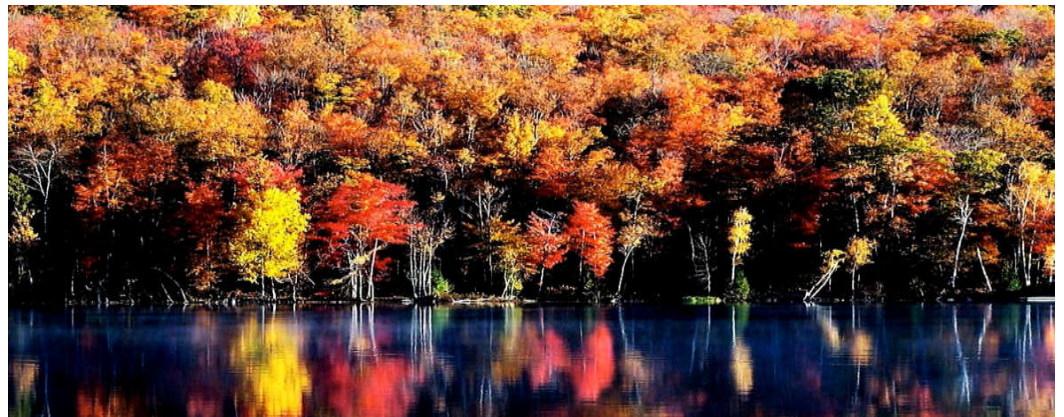
**FALL
EDITION**
OCTOBER 2018



Another spectacular fall at Grand Lake, to mark the end of another summer to remember. The water rose to a temperature of over 26 degrees C (80 F) making it really easy to enjoy.

We are indeed fortunate to be part of the Grand and Green Lake experiences we share, and as you will continue to read in this and future issues, we must all be continually diligent and vigilant to ensure that our lake environment remains as pristine as we found it - for future generations. We are all responsible for this legacy. Enjoy the off-season, wherever you spend it!

At the first meeting of the Executive following the 2018 AGM, Jim Nicol, Sr. was appointed President, Gary Beach was re-appointed Treasurer and Paul Butler was re-appointed Secretary for the coming year. Ray Otten was appointed Vice-President. Brian Reynolds, George Avon and Dorothy Laflamme were appointed directors-at-large for the ensuing year, but George Avon resigned from his position at the Board's September 2018 meeting. See the last page of this newsletter for a complete list of board members and their contact numbers.



Membership

This year your Executive has tried to use e-mails to stay in touch. If you have any suggestions on how we can improve communications, please let your Membership Chair, Rosaline Frith, know. For your information 88% of Grand Lake owners have already paid their membership dues. Out of 219 possible members, 180 have paid (65 of these have opted for winter patrol), 14 have confirmed they will pay and 25 are still being canvassed. To better represent you, we are hoping to increase our membership to as close to 100 % as possible. We will accept registrations for winter patrol (which commences late October and runs through mid-May) until November 30, 2018 when we will submit our final patrol list to our winter patroller, James Levesque.



We should continue to work towards increasing the size of our reserve fund to maintain its purchasing power.

Memorable 25th Grand Lake Golf Tournament



Treasury

Our treasury as usual reflects a strong surplus position going into the fall season, with government-backed investments (GIC's) of approximately \$62K and a normal operating account balance of approximately \$4K before paying for the winter patroller.

Our membership dues essentially fund all annual operating costs. Great value for \$25 a year, and we very much appreciate the tremendous ongoing support of our members!

As most of you are aware, the Association maintains the reserve fund for contingencies and unexpected disasters that could arise and impact our Members.

We have approved expenditures of approximately \$6,000 to initiate a program of sensitization, education and some basic control mechanisms designed to slow the spread of milfoil.

In addition, at the 2018 AGM we approved a more rigorous water testing regime which will provide additional benchmark information.

25th Annual Golf Classic

For a summer that has been somewhat hot and sticky, we were blessed with a beautiful day on July 27 at Edelweiss Golf Club for our 25th Anniversary Golf Event. Following golf and cocktails, over 90 people (a record) enjoyed a fine buffet dinner, golf awards, wine raffle and door prizes. This year we were able to get special sponsors to fund a 25th Anniversary golf shirt for all participants-including dinner guests. (Sponsors were Alia Construction, Gary Beach, Warren Stroud, Claridge Homes, Duss Brothers Motors Ltd. and Equipe Fleury Chenier). Emcees Dale Smith and Jocelyne Lemery-Paul waded through prizes very efficiently and a number of folks enjoyed music and dancing to "The New Classics". Grand Champions (low gross score) – Dale Smith, Alex Smith, Grant Rivett and John Wickenden, Most Honest Team – Siobhan Devlin, Celeste Irvine-Jones, Bernadette Irvine and Marysa Irvine. Closest to the Pin Women – Celeste Irvine-Jones. Longest Drive Women – Marysa Irvine. Closest to the Pin Men – David Gibbard. Longest Drive Men – Jamie Helmer, Longest Drive Senior Men –Tim Frank. Putting Contest – Dave Helgason. Opposite Hand 7 Iron Contest Women – Marysa Irvine, Opposite Hand 7 Iron

Men – Travis Lyndon. A special thanks also goes out to all our sponsors who supported the tournament with financial donations, gift certificates and/or prizes. Great West Life, Fidelity Investments, Beaudry Deschatelets, Chez Renaud, CI Investments, Golf Mont Cascades, Edelweiss Golf Course, Familiprix, Gauvreau Transport, Les Fougères, J.B.McClelland et Fils Home Hardware, Mermaid Pools, Rona Perkins, Quincaillerie Whalen, Marche Alimentaire R Tessier ("Axep"). Continued success of this event requires enthusiastic participants and a capable organizing committee and volunteers: Organizers Dale Smith (Chair), Siobhan Devlin, Gaetan Deschatelets, Tom Martin, Jocelyne Lemery-Paul, Dave Helgason and Janice Dempsey. Volunteers for the day Sue and Don Goodwin, Kori Smith, Rachel Reitz and Catherine Mullen. Special thanks once more to Gaetan Deschatelets for sourcing significant financial sponsorships. Tune back in next year for a new organizing team with something different to start the next 25 years...

Environment

Grand Lake is a member of the Federation of Lakes of Val-des-Monts.

The Federation has put forward its most ambitious project to date for the protection and improvement of lake water quality in the Val-des-Monts area. The *Val-des-Monts Integrated Watershed Management Project* (PGLVDM) is a study of all the accessible and inhabited lakes of the Rivière Blanche watershed in Val-des-Monts with a view to create a Water Master Plan (PDE).

This would see the Federation participating with VdesM to develop an action plan to seek proper funding (various levels of government) and then implement actual plans that will help us protect our watershed. Considering the magnitude and scope of the undertaking, progress is steady and faster than might be expected. The GLA is supporting this cause and the Federation's role.

The other major project that the Federation is engaged with is the ongoing infestation of

Eurasian milfoil in area lakes. This is a triple pronged attack...how to avoid infestation, how to reduce the spread, and finally, remedial measures. At the lake level, we have an extremely dedicated and active group who are working on all our behalves to contain this virulently invasive species. Their activities are outlined in another newsletter section.

For information about these two, and other activities of the Federation, please check their web site <http://www.federationdeslacs.ca>

In early September we tested for E-Coli and total phosphorus at several sites around the lake; water samples were taken at 6 sites around the lake for e-coli, 5 sites for total phosphorus, and Secchi disc readings at the 5 phosphorus sampling sites.

Our water testing methodology is being reviewed with a goal of looking closely at what other similar lake associations and association groups are doing, and the magnitudes of annual budget that is accepted as good stewardship. Thanks to the efforts of Brian Reynolds and others, the "how" of *OUR* methods appears to be aligned nicely with best-practices.

But the "when" (that translates to "how often?") is really where the financial reality becomes a constraint. The frequency of testing should be consistent and firmly established by membership input and budget approval. At the 2018 AGM we reached a consensus to increase our testing budget "up to \$3000-".

We are still developing a schedule and will entrench the testing locations for ongoing repeatability. In addition, the website will be used for transparency/availability of past and future results. We hope to have this all pulled together before spring 2019.

In the spring of 2019, just after the ice leaves we will test for phosphorous, then again in mid-June, late July and mid-September. Secchi disc readings will be taken concurrently. E-coli testing will be done in late-June, late-July, and late-August. (Continued on Page 9)

Walking Trails

The GL trail season came to an end on the Saturday of Thanksgiving weekend when thirty plus hikers converged at the Trail Head for the annual Fall Colours Hike and Lunch. The planned route involved navigating a route toward the Culbute and taking in several look-out spots. The weather co-operated (or at least the forecast rain didn't materialize) and the leaves were showing every shade of yellow, pale greens and red imaginable.

Unfortunately, after a just a few hundred metres on the trail we encountered a major impediment. The logging operations we thought had finished were in fact back in full swing. The lower reaches of the Culbute Trail were strewn with freshly cut young beech and hop hornbeam trees. Any tree of these varieties in the area of less than 15cms in diameter had been sawn off a foot from the ground, and left to fall where it may. The trail was pretty much obliterated. Although the full route had been covered in a reconnoitre just 2 weeks earlier, the trail was now covered with freshly felled trees and other debris left over from the major logging operation 2 years ago. This caused

a major slowdown and difficulty locating the path up to the heights above the Culbute.

The group, to their considerable credit soldiered on despite the conditions, although the hike was later dubbed "Abby's boot-camp".

We subsequently discovered that holders of the logging rights are systematically removing beech trees from the area in order to encourage faster growth of more valuable maple, birch, oak and coniferous trees. We have also established that the arm of the Quebec Government responsible for logging and other resource extraction activities on crown land is oblivious to the fact that the Grand Lake Association secured a 10-year permission to establish a hiking trail in 2008 (including a mid-point confirmation of that permission).

All to say there are now as many white blazes on fallen trees under piles of debris as there are blazes visible to hikers. That means anyone hiking for the remainder of the Fall season should opt for the out and back route to Lac de la Montagne where the blazes and trail are still intact.

More importantly, once we re-establish our permission to maintain the trail, and get the relevant departments of the Quebec Government on the same page, we will convene work parties to re-establish the trail on a route where we will not be subjected to regular logging operations – hopefully on the route we were given permission to use in the first place.

In the meantime, the good news is that if you are an avid snowshoer you can use the trail in the winter and not notice the havoc wreaked on the trail.

We'll need extra hands next year to restore the Trail. If you are interested in helping out, please get in touch with me. Meantime, have a good winter ... see you on the trails again in the Spring.

Abby Hoffman
abby.hoffman@canada.ca
613 614 3878

FYI – POINTS OF INTEREST

For details as to the recent work of the Grand Lake Milfoil Committee, please read the attachments and related information carefully. Hats off to Dorothy and her team and all the volunteers who are helping make this effort a success.

At the end of September we sent you an email about what Eurasian Milfoil is and what can be done to stop the spread of this invasive weed; now we are updating you on what further action is being taken. Attached is a map showing where Eurasian Milfoil is in our lake and where the buoys have been placed.

Eighty green buoys were installed at the end of September to mark the milfoil infested areas, and more will be installed in the spring. We ask that you respect the boundaries indicated by these buoys. They are a warning to please keep out!

In the spring, larger white buoys will be installed in sensitive areas where more caution is needed. These buoys will have a sign on the top to let you know to take extra care.

We are fortunate to be part of a pilot project with Block-Aid Inc. (see attached) which uses a jute solution.

So far there is no quick way to get rid of Eurasian Milfoil, but with your help we can perhaps slow down the spread. Please watch for more important updates on milfoil that will be coming your way.

The following link will take you to a podcast you can listen to about the spread of this weed in the St. John River, New Brunswick. We are not alone!

<http://www.cbc.ca/listen/shows/information-morning-fredericton/segment/15606269>

We continue to closely monitor all indications of land development activities that could impact our lake and environment in any way, and regularly meet with appropriate representatives of the various authorities who have some role in this domain.. If you are aware of any such activities that warrant further research, please advise a member of our executive, whose co-ordinates are on page 8.

A few members complained last winter that they had received no evidence of winter patrol visits. If you have subscribed for winter patrol this season, please make sure you have in plain view at your residence entrance an appropriate receptacle (e.g., clothespin or box of some sort) where James can deposit or attach your patrol receipt, otherwise it will be blowin' in the wind!

For those who need to arrange lake access via the Dam Lake landing for their boats in the spring of 2019, call Peter Kearns at 613-724-3582 after May 17, 2019.

Although water level at the end of October this year was low compared to 2017, this is largely due to rainfall in October being 120mm less than 2017. Water levels last fall (2017) were at record highs and caused shore and property damage through spring 2018. We believe that the restricted water flow to Dam Lake through the Barrage Bridge is a significant factor disrupting what nature intended and are approaching the Mayor to see what can be done to alleviate this situation.

HOT TUBS AND LAKE POLLUTION It's never safe to drain straight into the lake, and in Quebec, it's illegal to discharge grey water directly onto your property—it must be disposed of through a sewage system. But loading up your septic tank with 1,700 litres of water at once is going to flush out the bacteria that keep the system functioning.

Instead, one week before you intend to drain the tub, stop adding chemicals and leave the cover off. Chlorine and bromine, the most common sanitizers in tub water, evaporate when they're exposed to air. You can help expedite this process by turning off the heater and running the jets for a few hours.

Once the chlorine or bromine levels are close to zero, you can start pumping out the water into your septic system in small batches over a few days. Consider THE PHOSPHATES if anyone has used soap or bubble bath. That is why it is so important not to drain directly into the lake.

Sailing 2018: GLSA.ca

Where did it go? The 2018 season is behind us for all but perhaps one last sail as we transition to thoughts of the winter season ahead and preparations for next summer back on the water - pledging in the mean time to read those sailing tip books, varnish the rudder and learn what exactly 'buoy room' means prior to the first race of next season. Yet, before all is said and done here's a brief flash-back of summer 2018, highlighting the fun and active season we had full of memorable sailing on Grand Lake:

- * 10 scheduled races; 7 sailed; 3 cancellations due to weather; 4 races needed to qualify for overall standings;
- * Founder's Regatta and BBQ with 11 boats, 20 sailors and plenty of friends and family;
- * 20 different boats participating in one or more races;
- * An average 7 or 8 boats per Sunday race; double digit participation for the regatta;
- * 25 different sailors on the water; nearly half of whom were new or 'novice' sailors;
- * Participants ranging in age from 8 to >70;
- * Women sailors outnumber men;
- * Several visiting sailors from as far away as Austin TX and Toronto; including Sue Featherstone as a regular participant from Lac McGregor;

* A supportive and highly appreciated group of volunteer cottagers from up and down the lake helping with timing, setting marks and on the water.

* New starts:

- Sunfish fleet doubled with the addition of sailing stalwarts Warren Stroud and Chris Wanczycki and their two classic Sunfish
- Anne Witt transitioned from timer to Laser sailor;
- Steacie Y-Flyer revived and re-launched by Mike Avon (sailing with Kelly Lee) after 30 years in dry dock;
- Tall Cup Flotilla scheduled as a non-competitive 'round the lake tour in paddle and sail boats.

AWARDS	RECIPIENTS
Laser	Duncan Vipond
Albacore	Terry Ford and Ann Croll
Grand Lake Cup	Duncan Vipond
Clock Award ('timeliness')	Olivia Frith
Most Improved Sailor	Ann Witt
Submariner ('best swimmer')	Grace Avon / Duncan Vipond
Lunch Pail (with compass and flashlight)	Warren Stroud

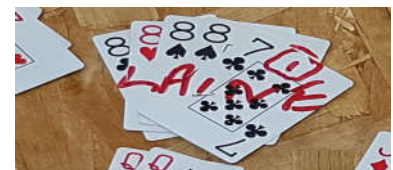
For further information, contact Duncan Vipond (devipond@rogers.com) or Ian Maclaren (ikmaclaren@gmail.com).

Grand Lake Poker Run-Family BarBQ

Thanks to all who made the 2018 event the biggest yet. More than 100 of your fellow Grand Lakers were at the Goldberg's party place for the annual get together for corn, hot dogs, burgers and drinks as well as prizes for the children. The family name of Laine, the 2018 best hand winner, remains a mystery-the text message to Susan Goodwin has disappeared. Susan needs Laine's co-ordinates as tradition has it, this lucky person has the task of sourcing the corn for next year. Thanks to Susan and Don Goodwin for organizing the event, to the cooks, Janice and Merv, and to other volunteers for the help with the set-up, tear-down and garbage removal; to the Houghton's, Gunther's, Grand Lake Fishing Club, Coopers, and Sue and Abby for card distribution; to Gary Beach's friend Barry for getting and husking the 9 dozen corn cobs; and a very big thank you to Dan and Whitney Goldberg for the use of their property once again to host this final event of the season. Susan has volunteered to organize next year's poker run which will take place on Saturday August 31, 2019 (rain date is September 1). All are welcome and you can just join the participants at the Goldberg cottage where you can buy a hand or just the food. Come and meet your Grand Lake neighbours and celebrate the summer past.

Poker Run 2019 is planned for Saturday, August 31 with a rain date of September 1.

Save the date!



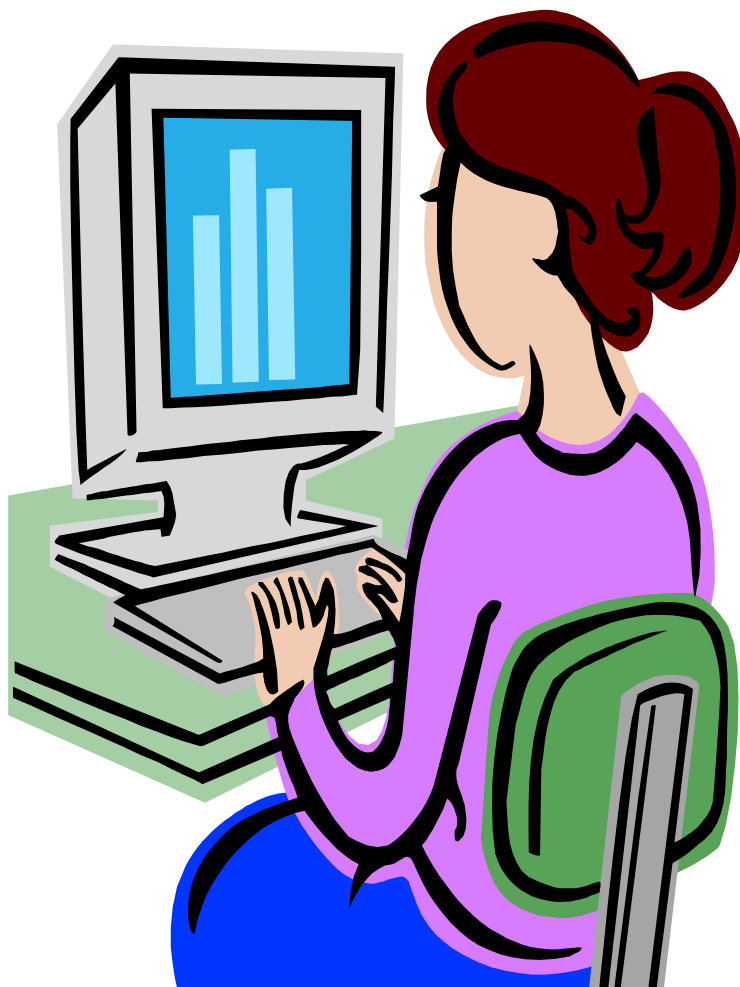
Website (www.lacgrandlake.ca)

Thanks to all who contributed to the website this season including write ups, photos and Sailing Race results.

Reports and photos from lake activities, most recently the October Fall Trail Hike, Canada Day, Golf Tournament and Poker Run etc. have all been posted and are up to date. Sailing results go up each week as received.

We always need new content that would be of interest to cottagers to make the web site engaging. Contributors and volunteers are always welcome!

Please contact butlerpauld@gmail.com



Grand Lake Executive 2018-2019

President	Jim Nicol	(H) 613-523-2216; (C) 819-671-2625 (Cell) 873-688-8786; jim@jimnicol.ca
Vice President	Ray Otten	(H) 613-729-6845; (C) 819-671-0885 rayotten@rogers.com
Treasurer	Gary Beach	(H) 613-238-1616 (C) 819-671-2418 (F) 613-231-6576; jamesgarybeach@gmail.com
Secretary	Paul Butler	(C) 613-868-7768 butlerpauld@gmail.com
Membership	Rosaline Frith	(H) 613-262-2831; (C) 819-671-0401 rosfrith@outlook.com
Past President	Dale Smith	(C) 819-457-4136; (F) 514-908-9677 (Cell) 514-891-9805;dale@dalegsmith.ca
Directors At Large		
	Nick Barber	(H) 514-945-5804; (C) 819-457-2871 nccbarber@gmail.com
	Francois Jacques	(H) 613-829-1375; (C) 819-671-3401 jacla5@yahoo.ca
	Dorothy Laflamme	(H) 613-447-1519; (C) 613-671-0915 <u>dot10@rogers.com</u>
	Peter Kearns (GL Sports Club)	(H) 343-880-4232; (C) 819-671-4049 (Cell) 613-724-3582; pkearns@rogers.com
	Brian Reynolds	(H) 819-669-2062; brian.rey@bell.net

GRAND LAKE/LAC GRAND EXTRA CONTENT

Environment - Continued

Interpretation

Total phosphorus ~ while the results appear to indicate a worrisome increase over last year, a review of past results does show that there have been previous peaks of equivalent magnitude. But behind occasional spikes, the 15 years of data which we have is showing a clear upward trend year-over-year, which should be the focus and concern of us all. Please remain vigilant by watching the products you use for cleaning and ensure that they have zero Phosphate content.

E-coli results showed negligible levels....i.e. the lake water is safe for all recreational activity. Because the lake is classified as surface water, it cannot be deemed safe for drinking. The only elevated readings were, curiously, from the Culbute ingress at the North end. This may have been a transient spike, but we will monitor for any ongoing trend.

Water clarity ~ While long-time residents often discuss the decrease in water clarity over many decades, the Secchi Disk results continue to be consistent with the classification OLIGOTROPHIC: "clear water with very low levels of phosphates, algae, and nutrients."

The annual appeal

The direct link between human activities on a lake and phosphate increase/water clarity decrease is irrefutable. Short of Draconian measures, which would be totally unrealistic and unsupportable, there is really no action that will halt or reverse the gradual degradation of the lake without complete buy-in and cooperation of all lake residents. Simply, water quality and environmental stewardship is, and will, be the responsibility of all of us.

The three most significant contributors to this degradation are shoreline erosion, chemical runoff, and careless operation of boats.

The three most effective countermeasures to which we can all contribute are:

- 1) Maintain your shoreline in the most natural state possible. Native vegetation does an effective job of retaining many of the products of surface run-off, particularly phosphates and nitrates, and offers some protection against shoreline erosion.
- 2) WYW ~ Watch your wake. There are still a number of boaters who seem completely unaware of the serious impact of their wakes on the lake shoreline. The Grand Lake Association Boating Guidelines were not formulated as an attempt to restrict fun or use of the lake; rather, they were intended to acknowledge the large increase in lake population over the years and the need to try to balance the varying uses of the lake with a minimal impact on its ecosystems. Wakes require time and distance to expend their energy, otherwise, the full impact of that energy will be absorbed by the shoreline directly. A wake that drives hard onto shore will drag sediment back into the shallow water, causing silt to cloud the water and gradually smother the bottom.

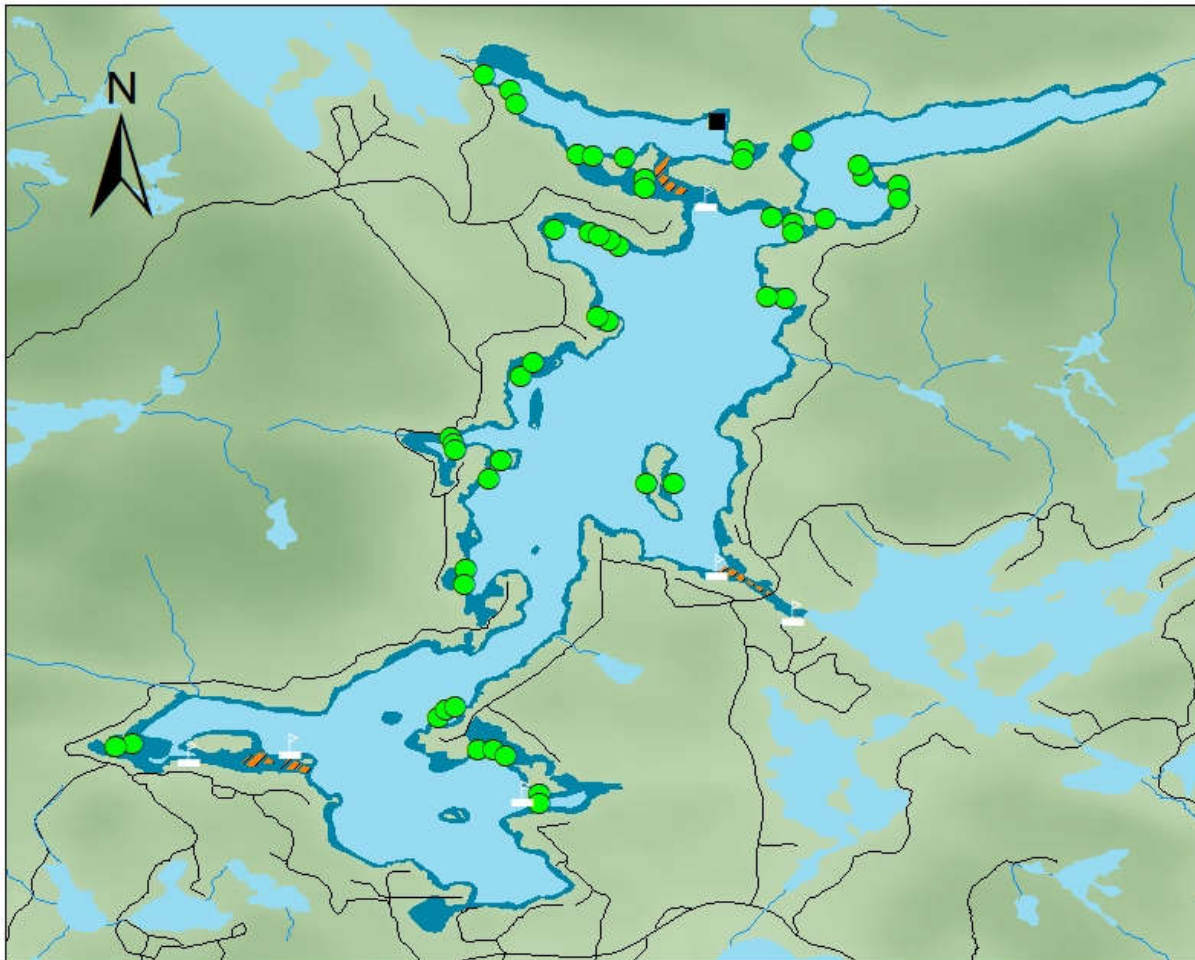
The first 10 feet of lake bottom supports almost 90% of the aquatic life in the lake. It is not rocket science to extrapolate the importance of protecting that buffer zone.

If you are within 100 feet of shore, you should be travelling dead slow, and producing no wake.

Try to avoid patches of weed. There is more than likely milfoil within the patch and if it is cut loose, will continue its invasion of the lake.

- 3) Perhaps the easiest, make "greener" decisions regarding many household products (we are a long way from a municipal drainage system with sewage treatment etc.) For example, if you operate a dishwasher, consider using an environmentally-gentler brand of detergent.... same with laundry soaps. There are many other examples. Specialty shops now cater to this market niche. In most cases, the cost is comparable to "less-green" items.

Watermilfoil areas delimitation - Grand and Green Lakes



0 0,5 1 2 Km

Buoys

type

-  White buoys - Sensitive milfoil area - Keep out
-  Educational sign
-  Green buoys - Warning milfoil area - Keep out
-  Buoy strings
-  6m aera



**Fédération
des lacs** de Val-des-Monts

Stéphanie Milot,
B.A.A., Environmental management Master
www.federationdeslacs.ca
17-10-2018

BLOCK-AID INC. MILFOIL INFORMATION

Hi Dorothy,

As per your request, here's an up-date regarding Block-Aid Inc. and Eurasian milfoil.

- We are currently in a holding pattern regarding permits, since the Quebec Ministries of Fauna changed their minds a couple of years ago and stopped providing permits for the installation of burlap to control milfoil. The root cause to this problem is that there is no infrastructure within the municipalities of both Québec and Ontario to deal with this new solution. The permits come from the regional level and they only follow the rules, they do not make the rules. They do have the ability to deviate from the rules when they see fit, but very few would do this. Part of this issue stems from the Federal Fisheries Act at the federal Department of Fisheries and Oceans (DFO). Back in the 70s people were pouring sand into lakes to make beaches, which had a negative affect on fish habitats. Sometime after that the Federal Fisheries Act adopted some statements which basically said "you can't harm fish or their habitats". That then goes through the provincial level down to the regional level, which was partly interpreted as you can't put sand in a lake.
- Last year in discussions with the related Assistant Deputy Minister at DFO, we stated that their Fisheries Act was preventing us from actually repairing fish habitats. Habitats that were already damaged from Eurasian milfoil. Toward the end of the discussion the Assistant Deputy Minister indicated that they would be interested in supporting our process in the form of running some projects. Their definition of a project would be installing burlap in a group of lakes. In further discussions a DFO team leader, has indicated that he would support a Quebec project (with multiple lakes) to install burlap and have discussions with his provincial and regional counterparts to work through the permit process. It now looks like it is heading in the right direction.
 - It should also be noted that at that point in time there were no Canadian policies that addressed the "repair" of fish habitats. Canadian policies only focused on protecting habitats. There is usually a different set of rules to repair an already damaged habitat.
 - Recently DFO has posed on their website that planned changes to the Fisheries Act in 2019 will include the repair of habitats.
- Currently Block-Aid is in the process of applying for a number of grants. This includes looking at how we can access some of the \$8M in funds identified by the Québec Provincial government to be targeted for Eurasian milfoil. Our primary focus is on a Strategic Innovation Fund (SIF) that starts at \$10 million (50%) for a \$20 million project. This project will include development, equipment, facilities and extensive

testing. We are currently building a large partnership associated with this project. That partnership will include;

- 5 or 6 universities and colleges
- a number of manufacturers
- a number of environmental groups including ABV des 7
- we will start with about 25 lakes from Québec and 25 from Ontario who wish to be part of the extensive testing of the equipment and process. This includes, getting burlap installed in the lakes at a discounted cost.

We believe that we will be in a good position to get a SIF grant with a very large partnership. Grand Lake is on the list as one of those 25 lakes from Québec. We can include other grants within this opportunity. In general, Canadian government will cover up to 75% of costs to fund innovative opportunities. Other grants we are applying for include the Build it in Canada Innovation fund (BCIP) and the Industrial Research Assistance Program (IRAP) fund. We have had IRAP funding in the past and certainly qualified for in the future.

What this means for grand Lake is that initially there is no financial commitment, only an interest in being part of the testing process. However in for future, there will be an opportunity for Grand Lake to get large amounts of burlap installed at a discounted cost.

We will keep you posted as things progress.

Regards,

Rob Perrins, P.Eng
Block-Aid Inc.